



STATE OF NORTH CAROLINA  
DEPARTMENT OF TRANSPORTATION

ROY COOPER  
GOVERNOR

JAMES H. TROGDON, III  
SECRETARY

December 11, 2019

**To: Prospective Bidders**

**From: Jonathan W. Mitchell**  
**Division Contracts and Proposals Engineer**

DocuSigned by:

*Jonathan W Mitchell*

02B404268BC84C2...

**Contract ID#: DC00280**

**WBS Element: 2019CPT.03.16.20312**  
**2019CPT.03.20.20822**

**Subject: Addendum #1: SHORT OVERLAY, RESURFACING, PATCHING  
EXISTING PAVEMENT, ETC.**

The Subject contract proposal contains the following addendum:

- 1- Revisions to the *DC00280\_Duplin Maps, Etc.* document:
  - a. Map 22 (SR 1421 - Carlton Dr.) length corrected to read [MP 0.00 – MP 0.26] not [MP 0.00 – MP 0.13]
  - b. Map 23 (SR 1422 - N. Country Club Dr.) length corrected to read [MP 0.00 – MP 0.64] not [MP 0.00 – MP 0.26]

**\*\*\*An Addendum has been added to Bid Express.**

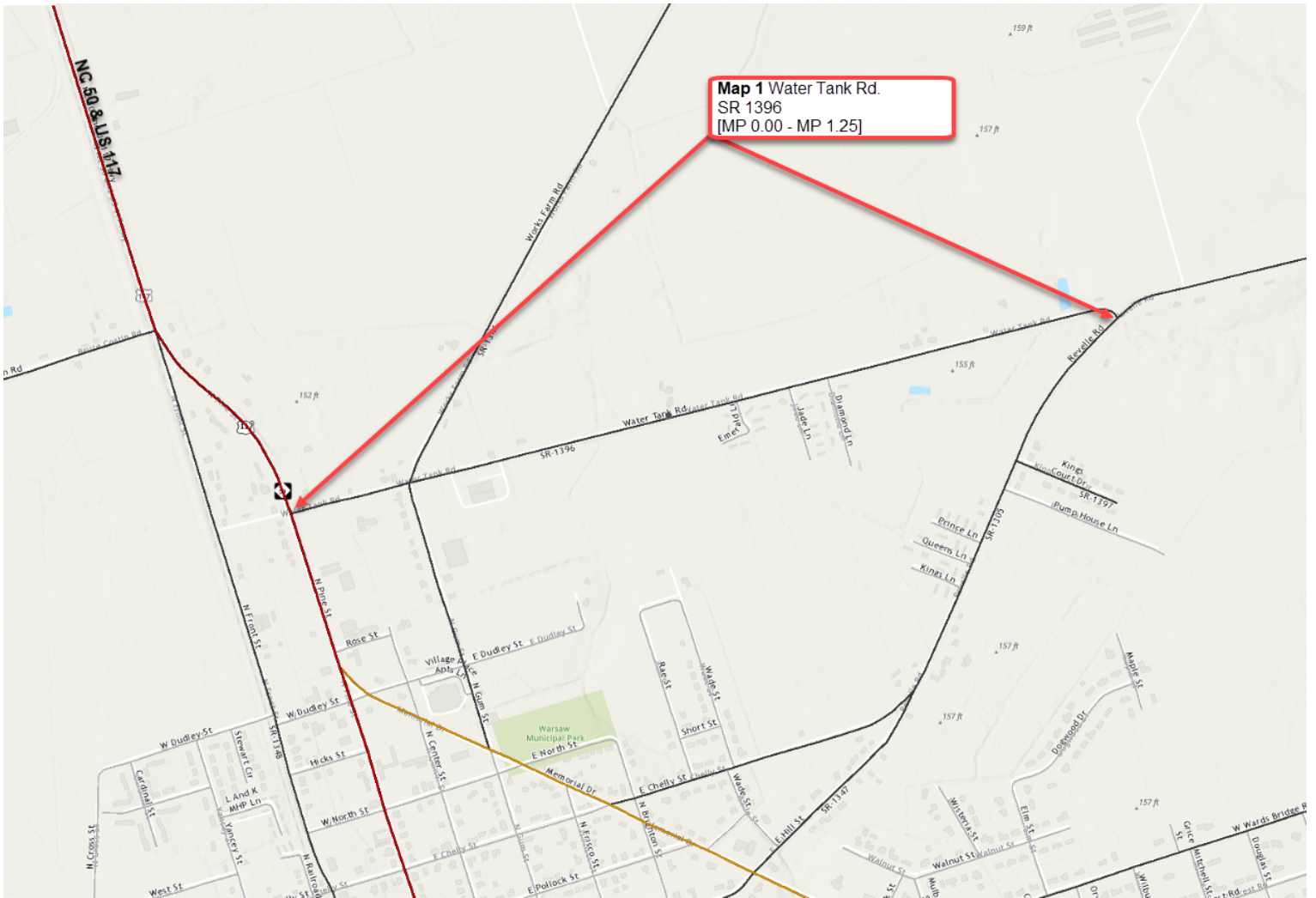
JWM/mpk

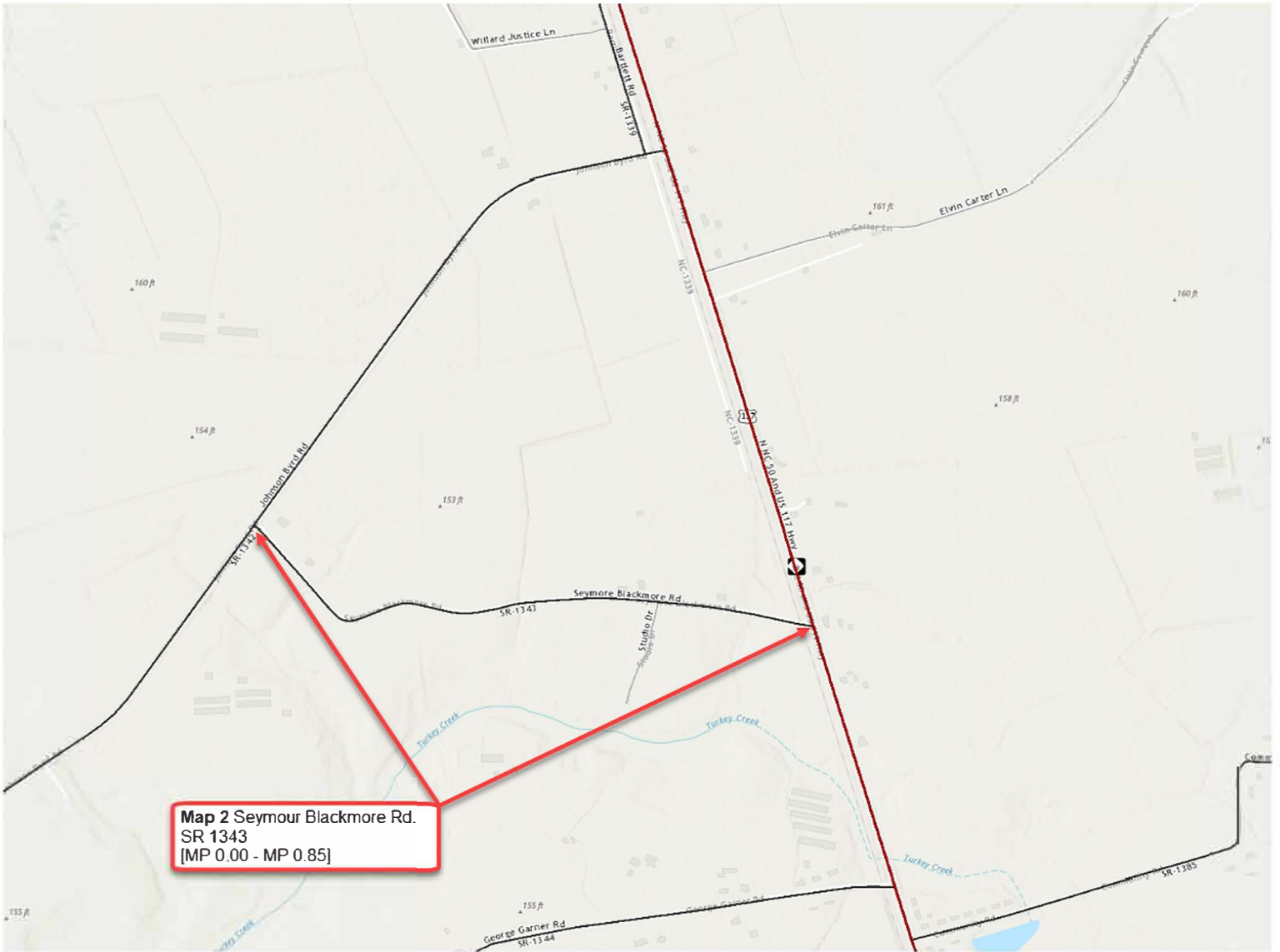
*Mailing Address:*  
NC DEPARTMENT OF TRANSPORTATION  
DIVISION OF HIGHWAYS  
5501 BARBADOS BOULEVARD  
CASTLE HAYNE, NC 28429-5647

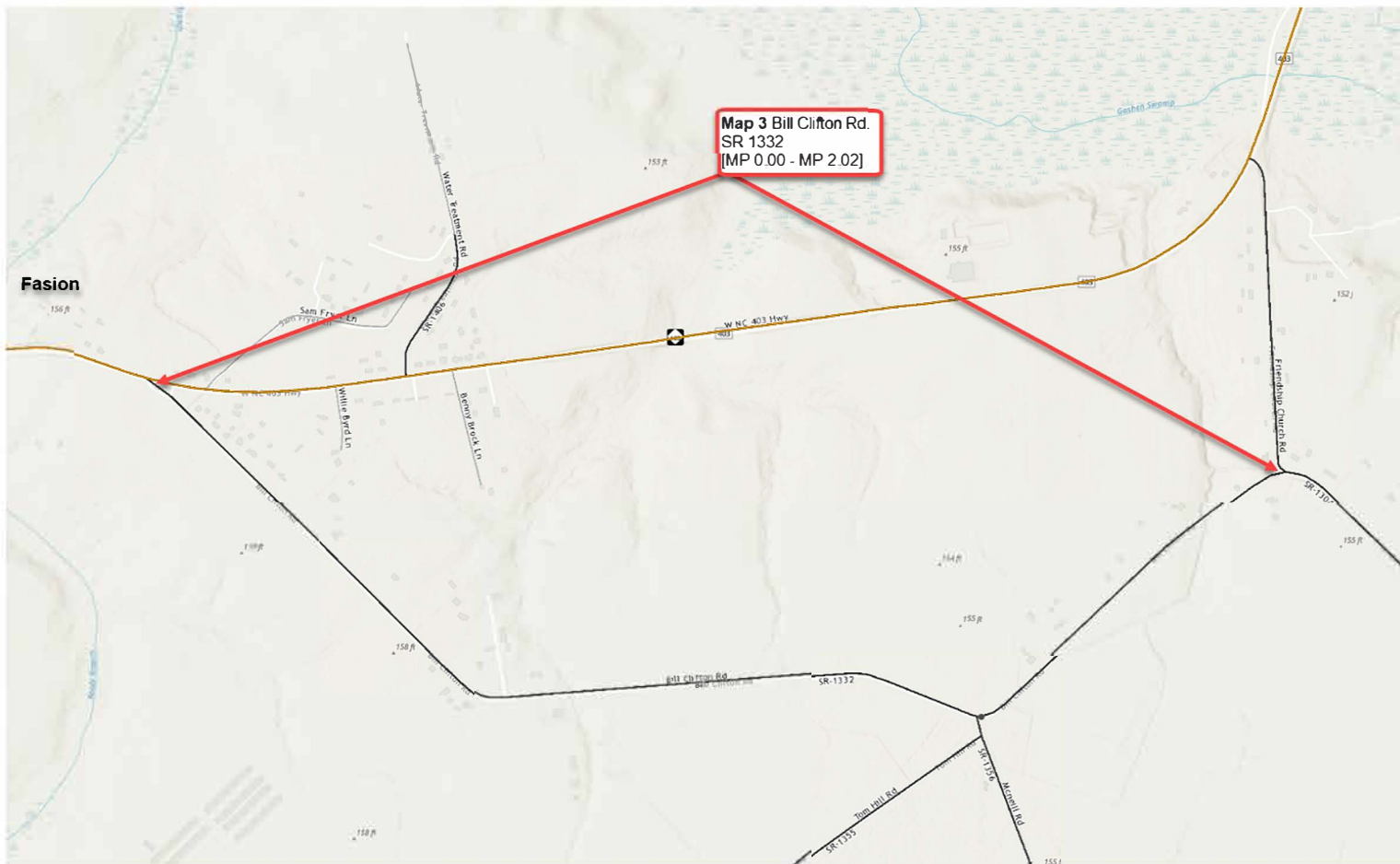
*Telephone:* (910) 341-2000  
*Fax:* (910) 675-0143  
*Customer Service:* 1-877-368-4968

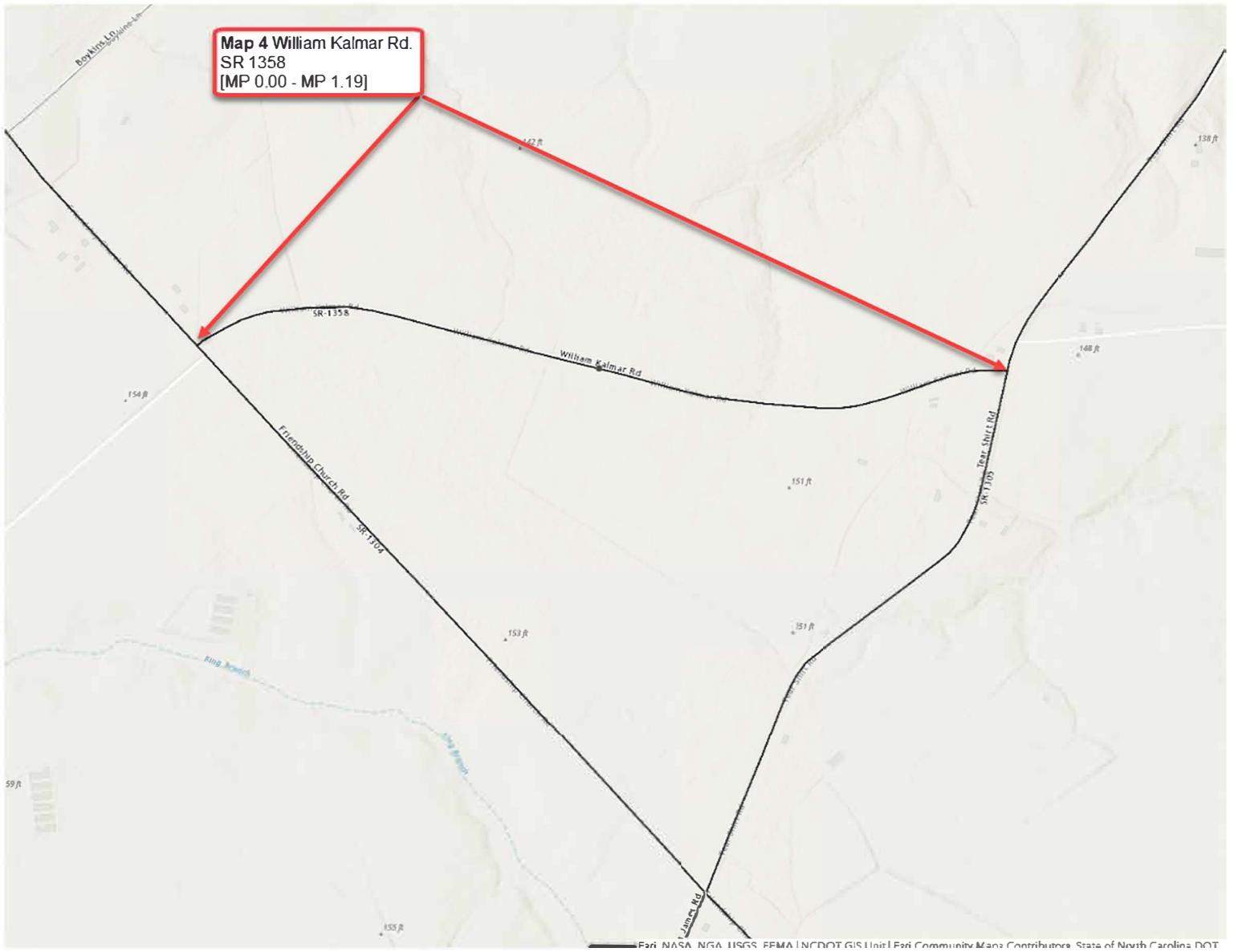
*Website:* www.ncdot.gov

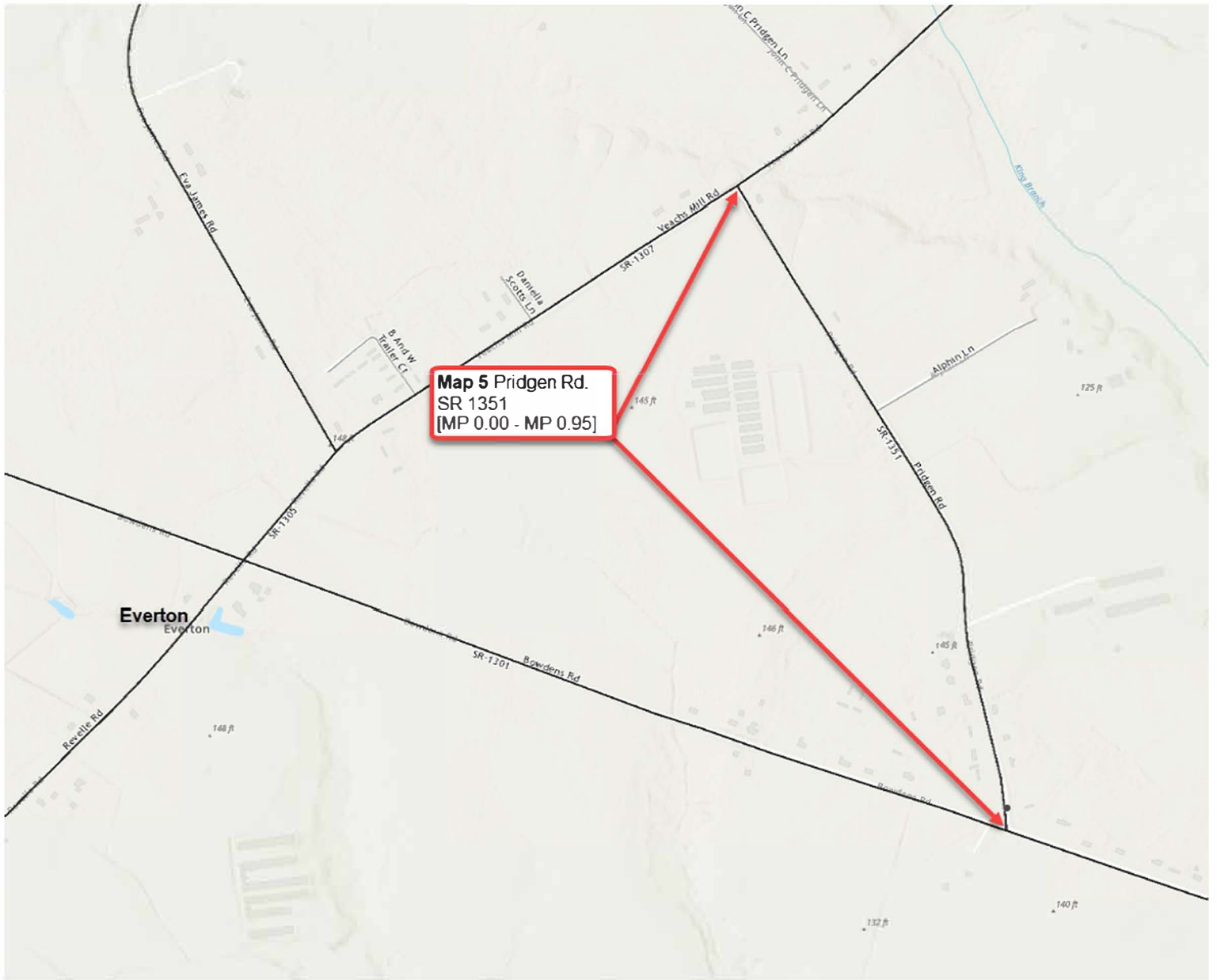
*Location:*  
5501 BARBADOS BOULEVARD  
CASTLE HAYNE, NC 28429-5647



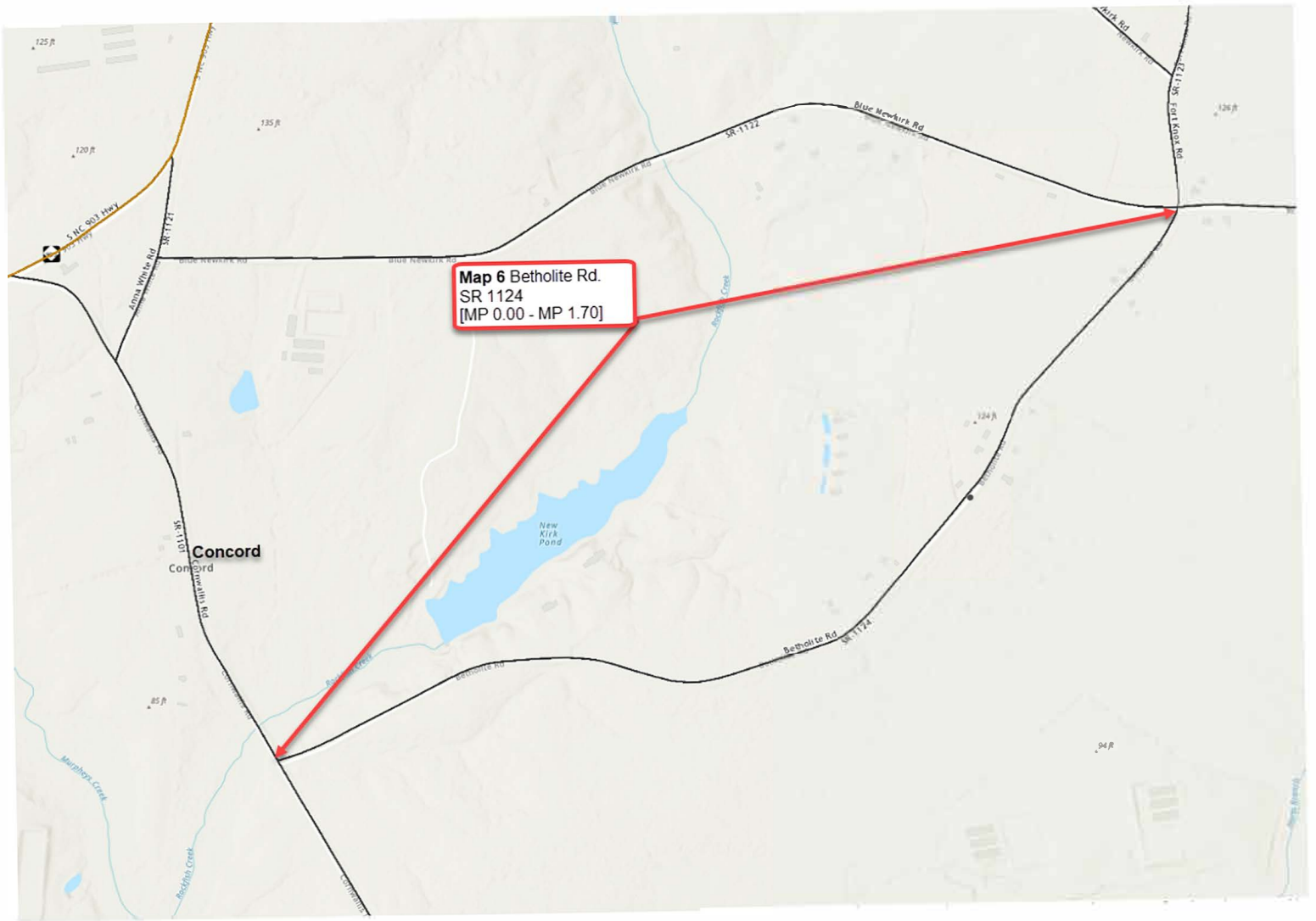


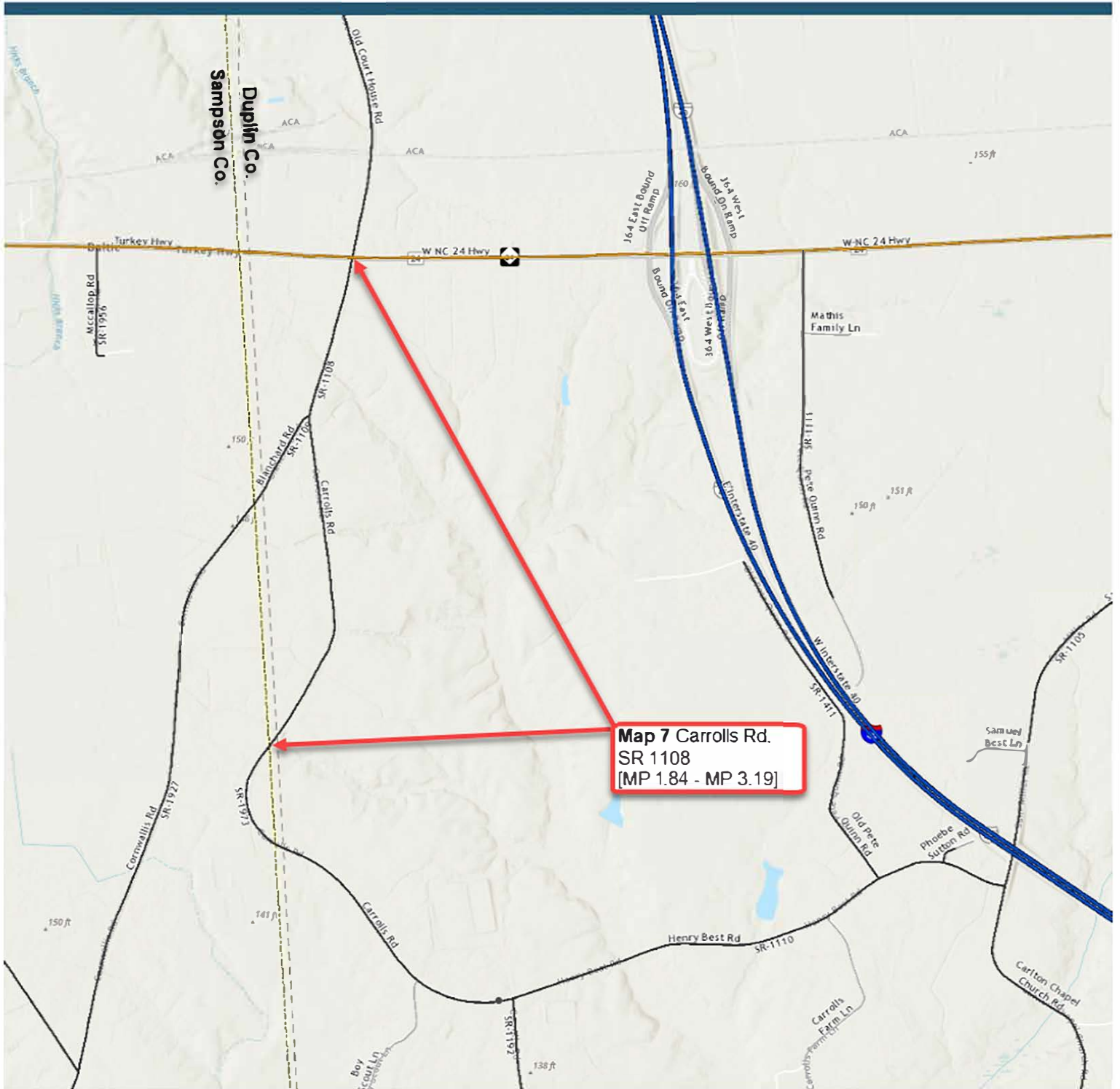




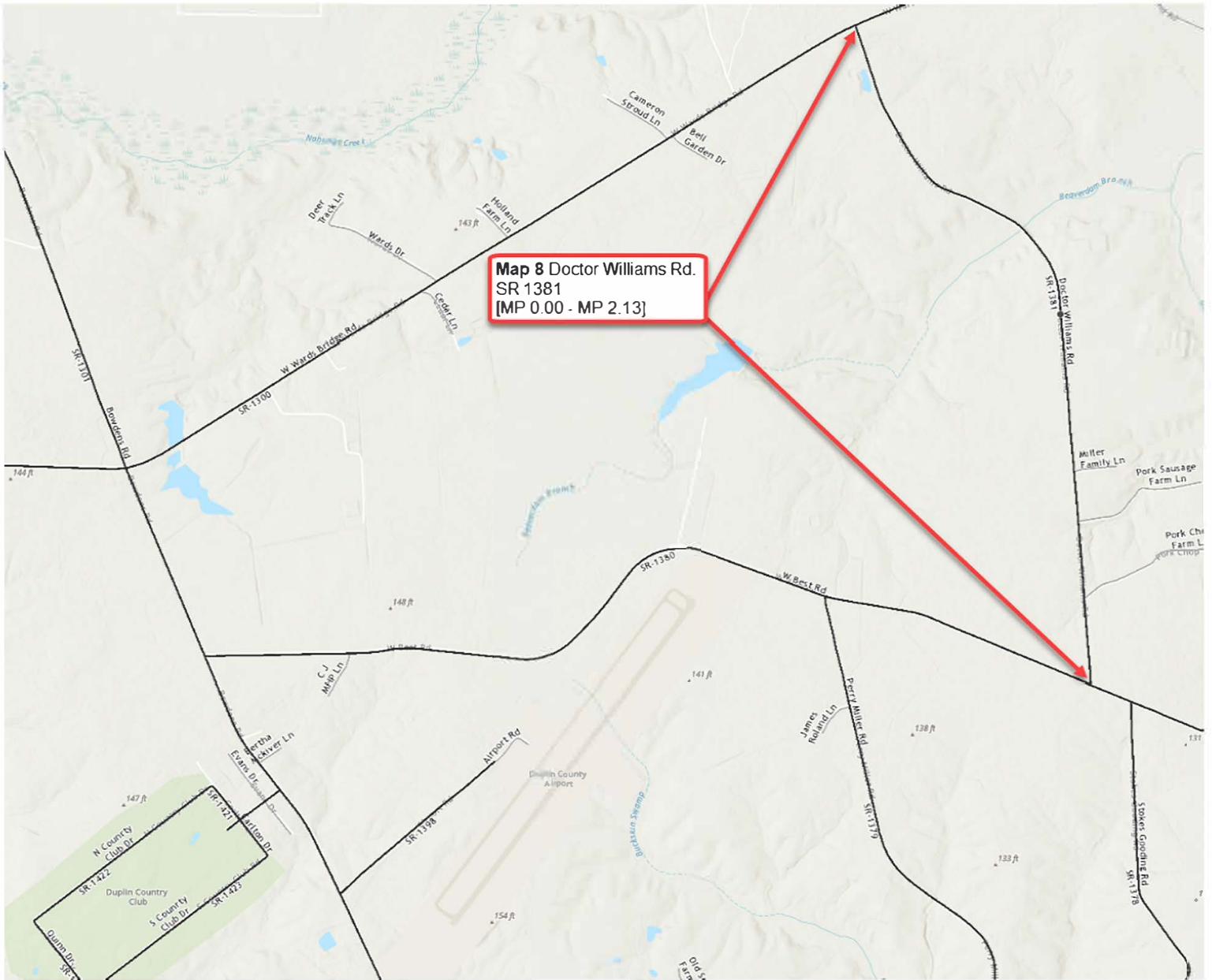


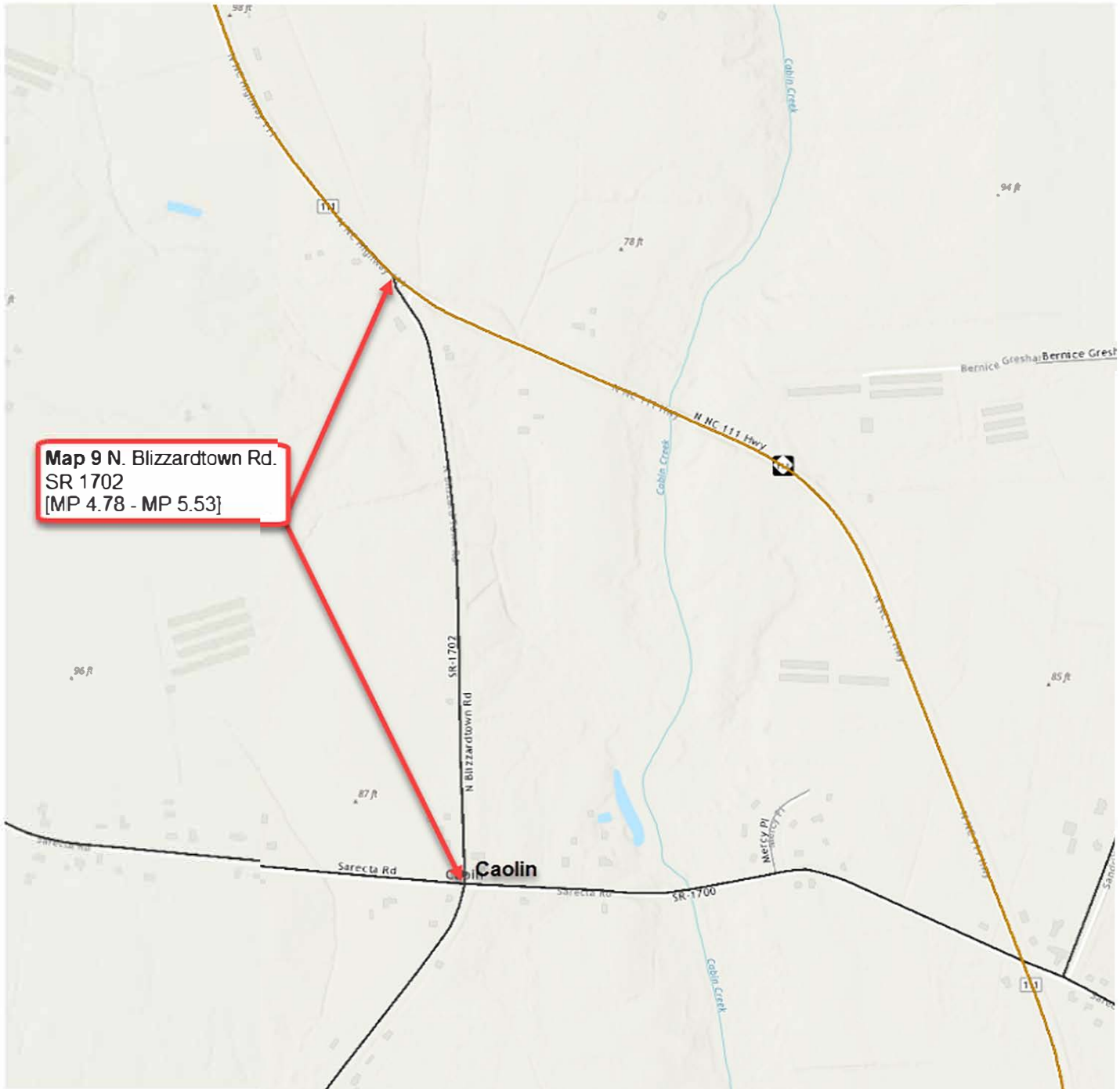


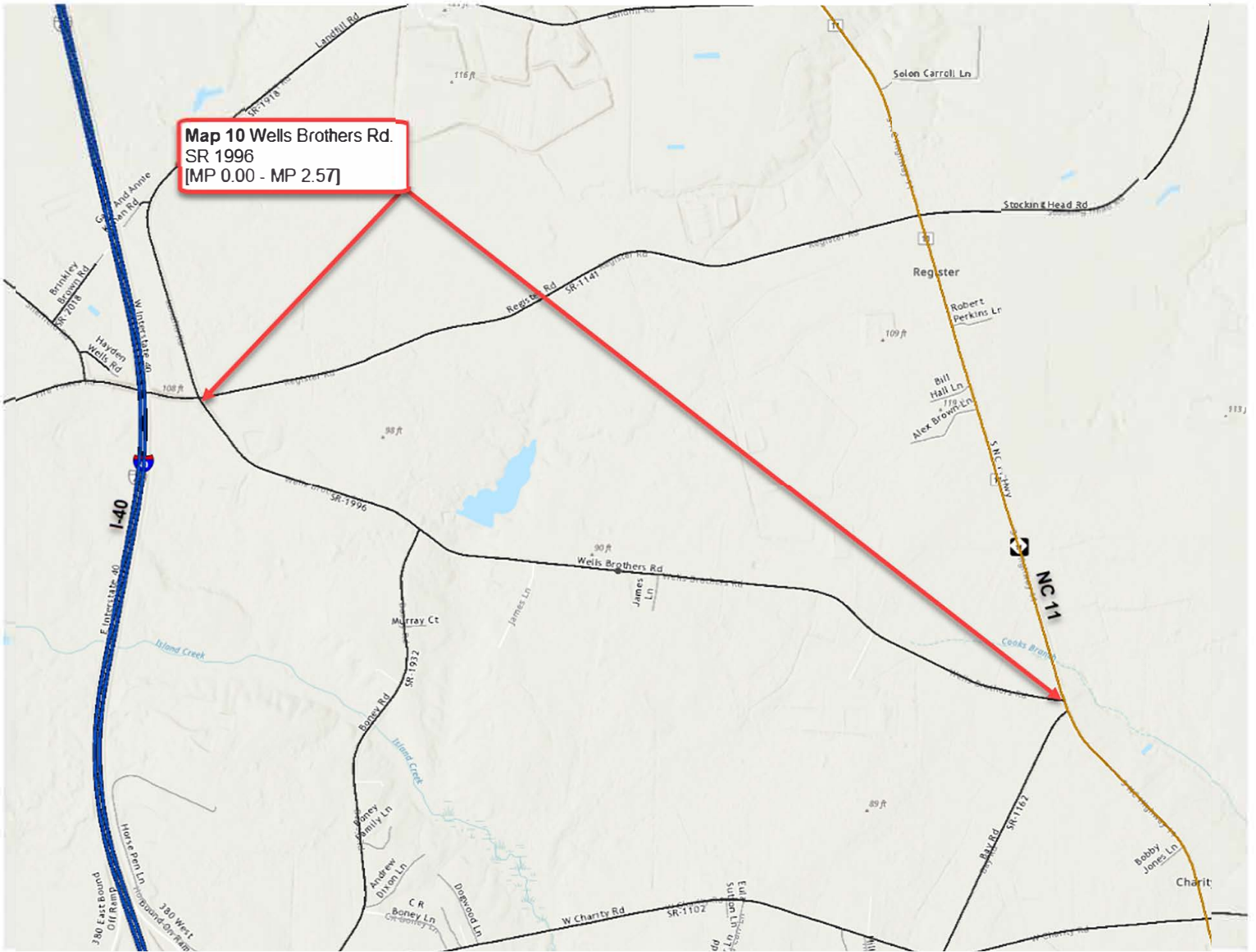


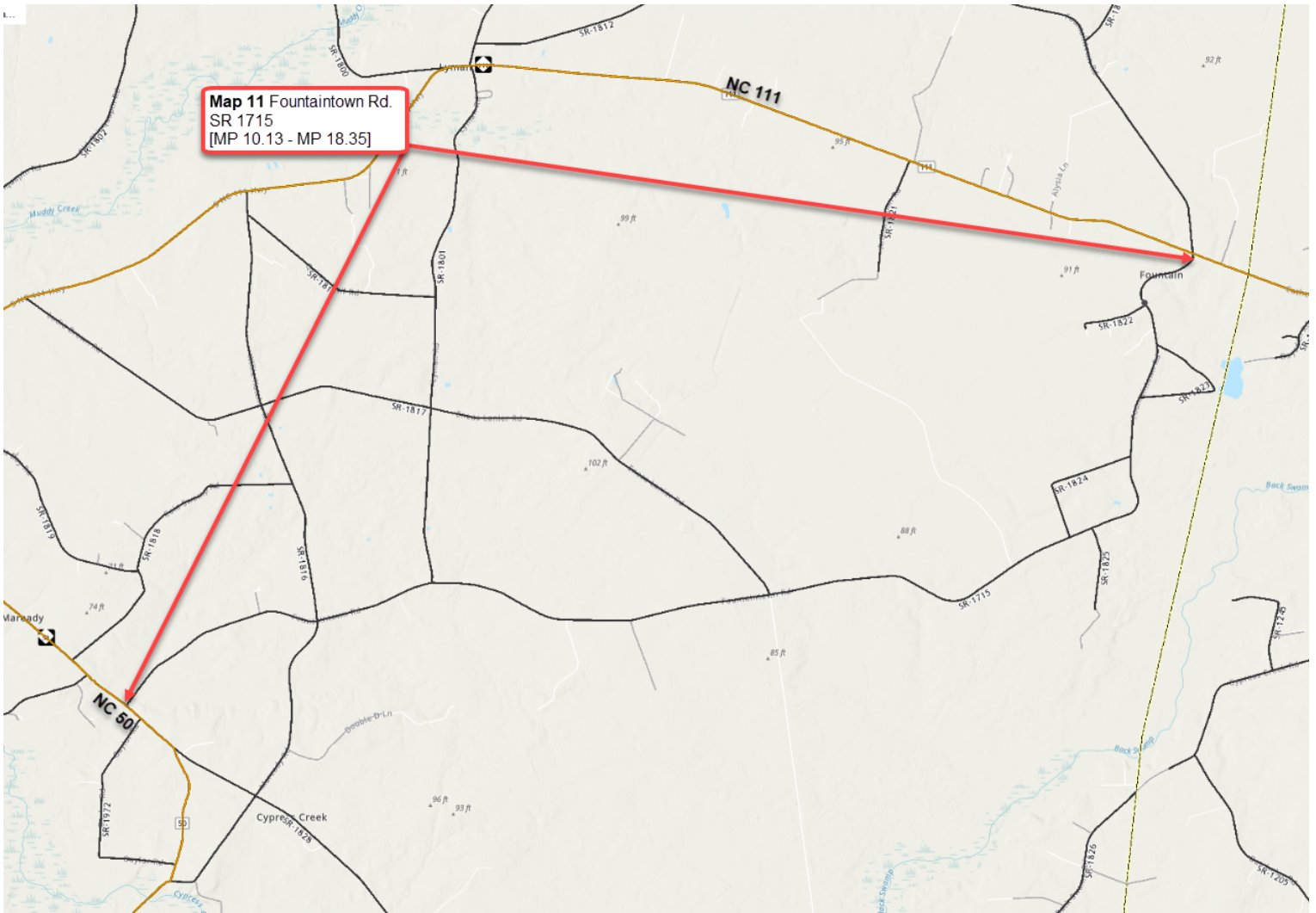




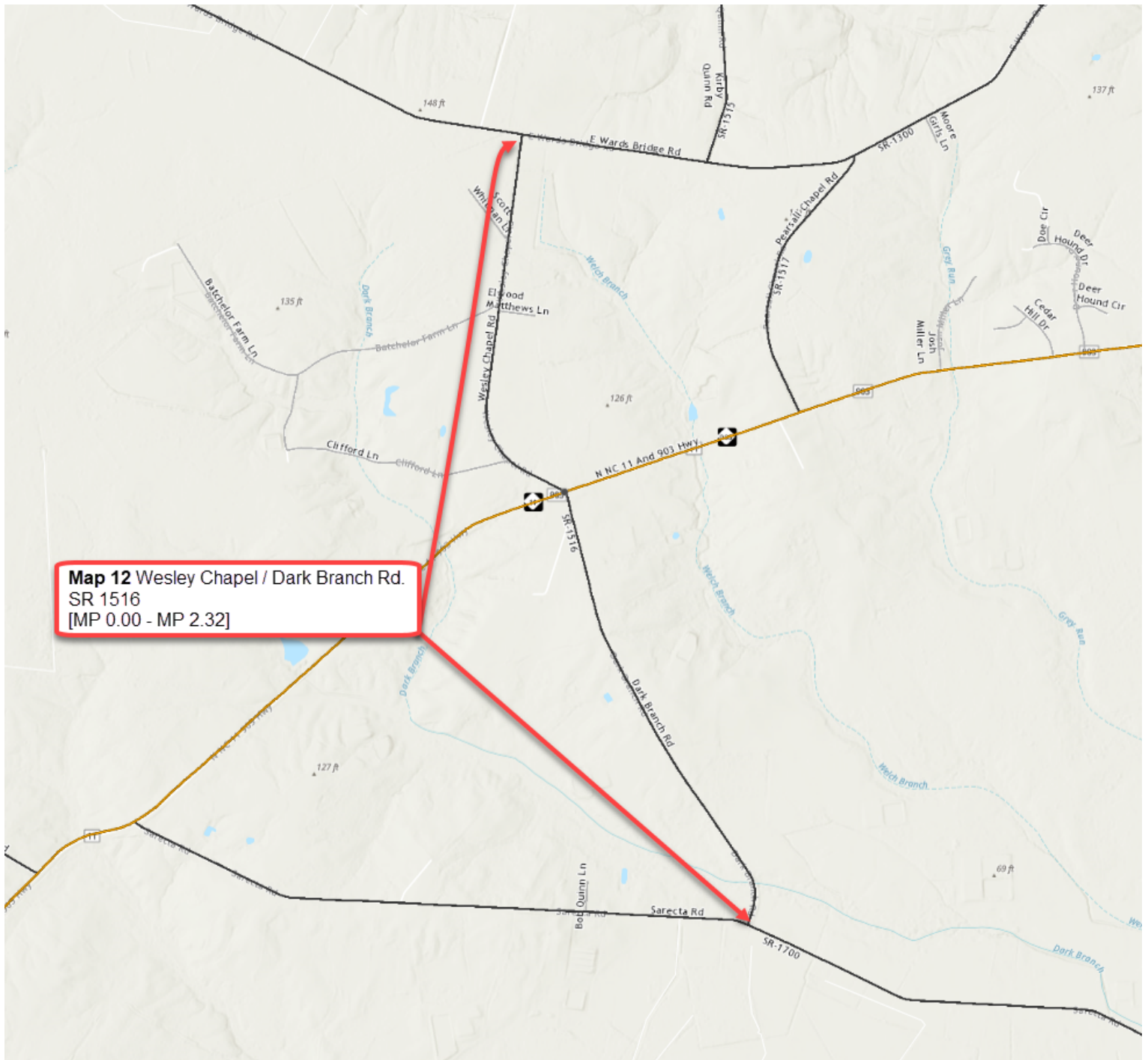


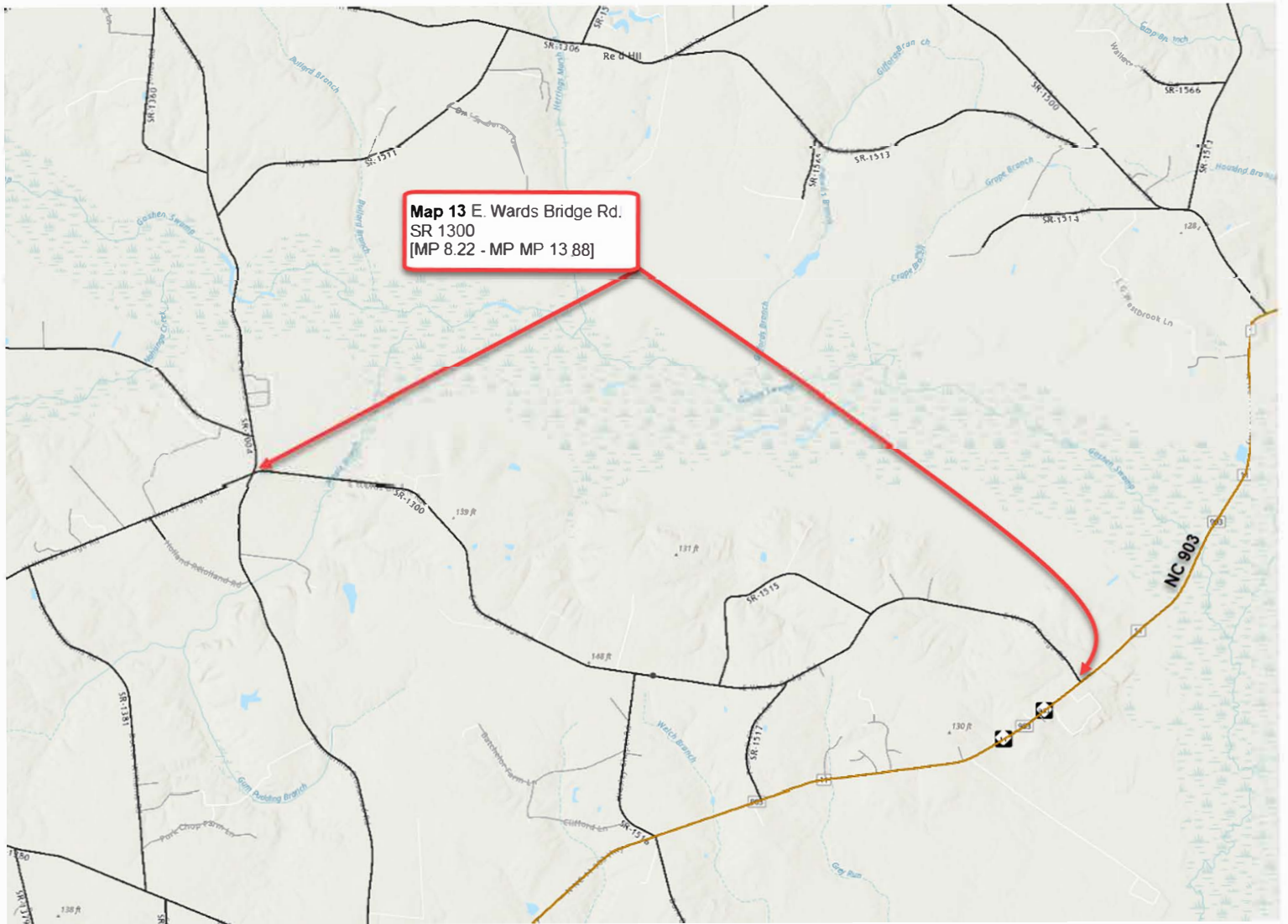




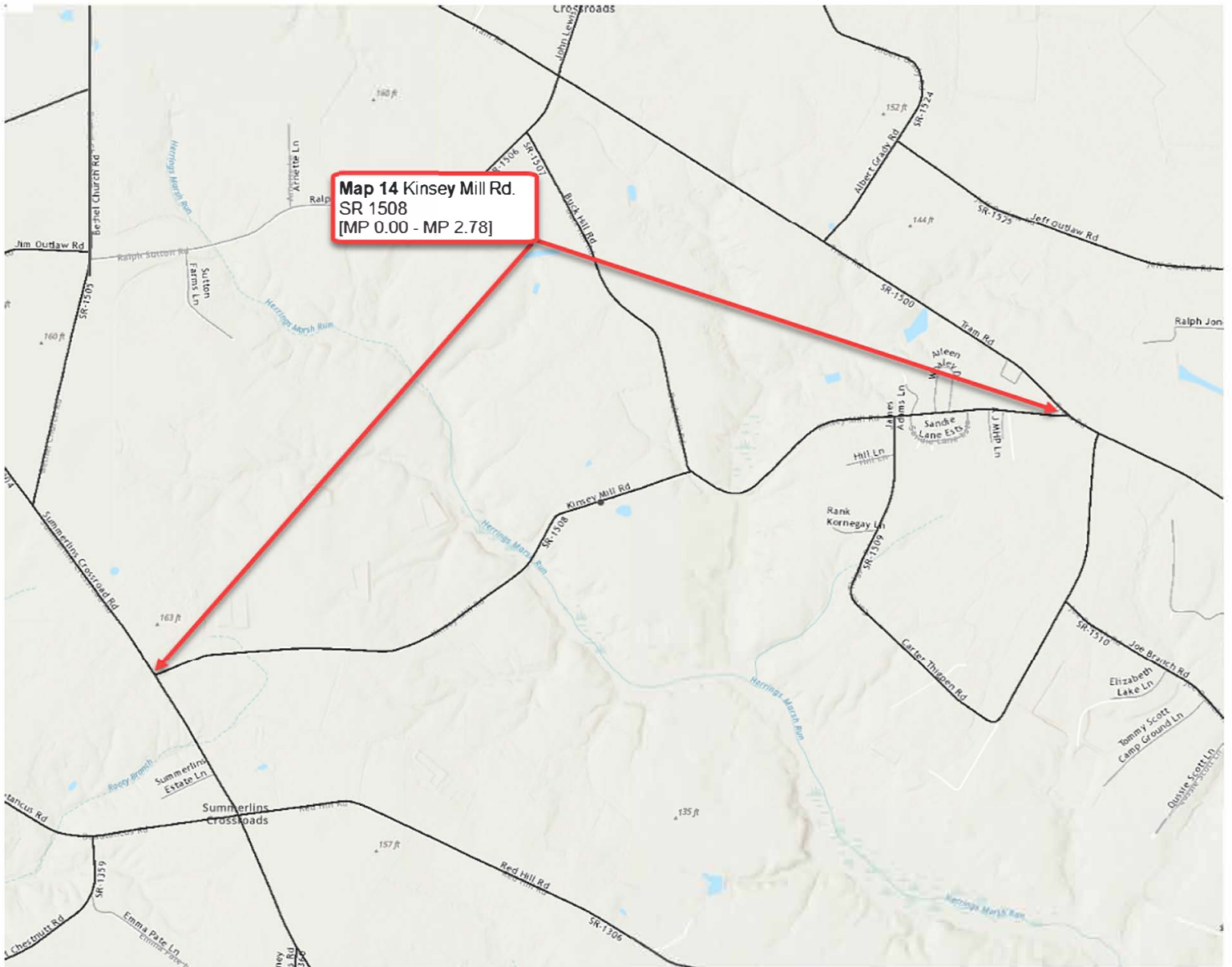


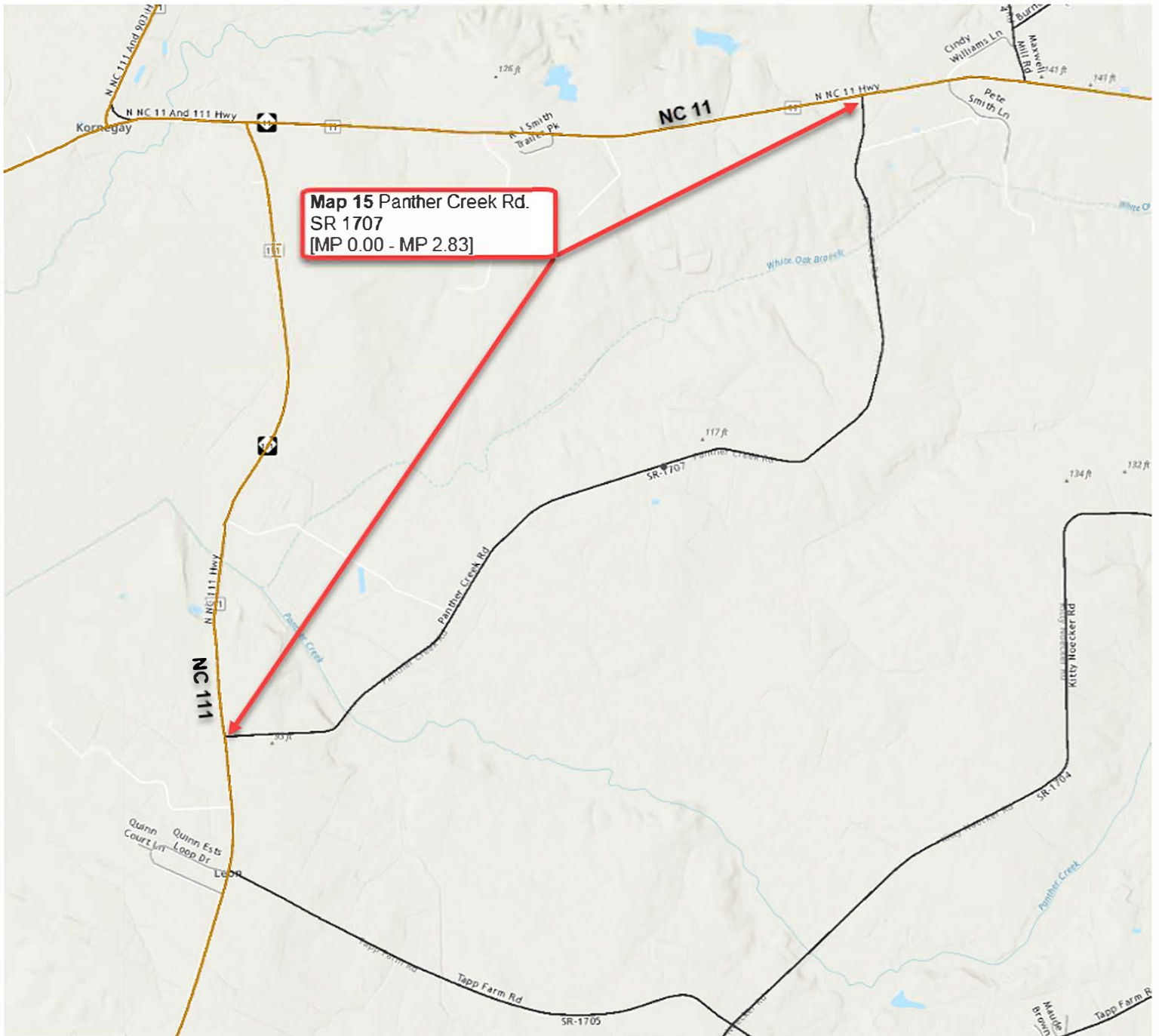


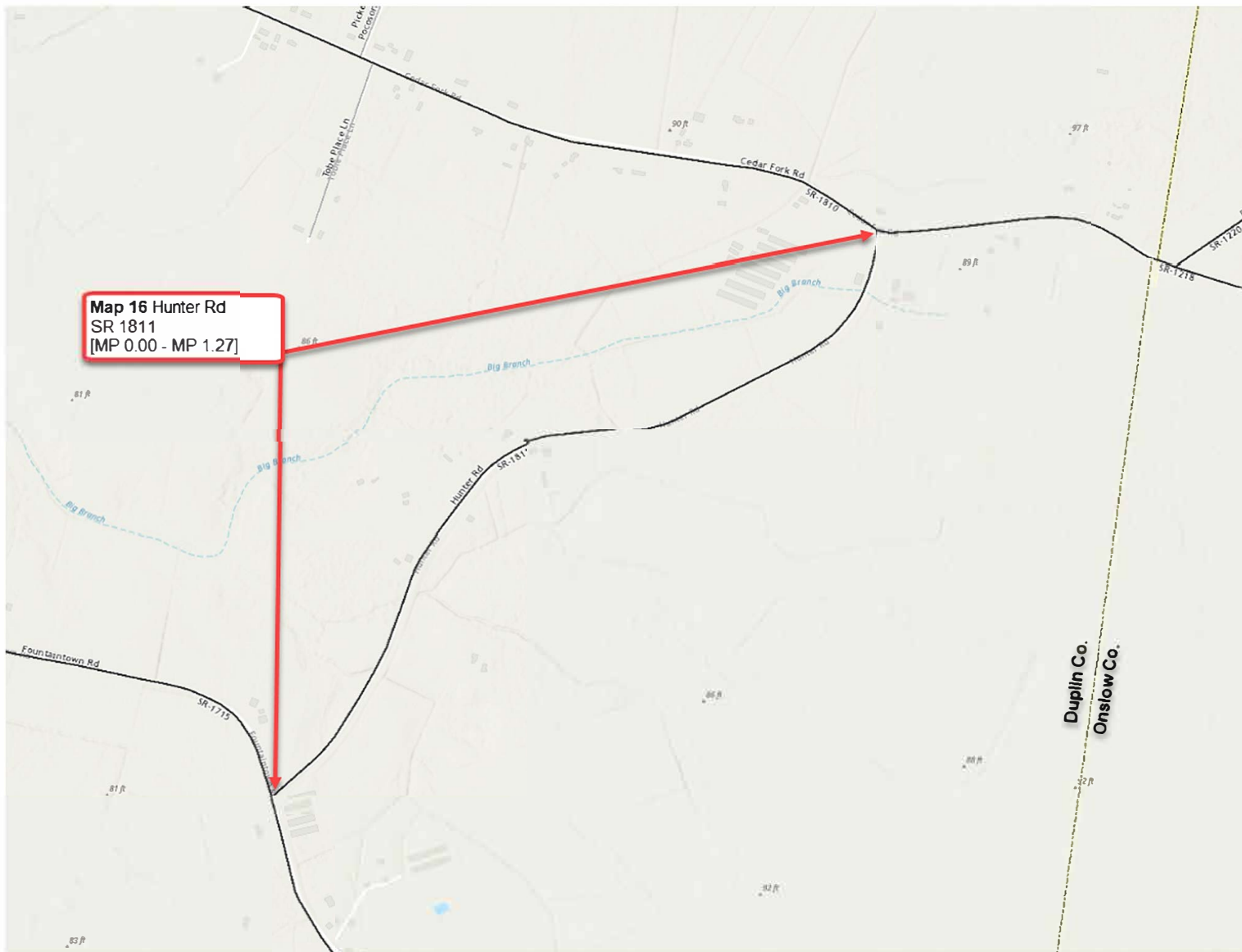


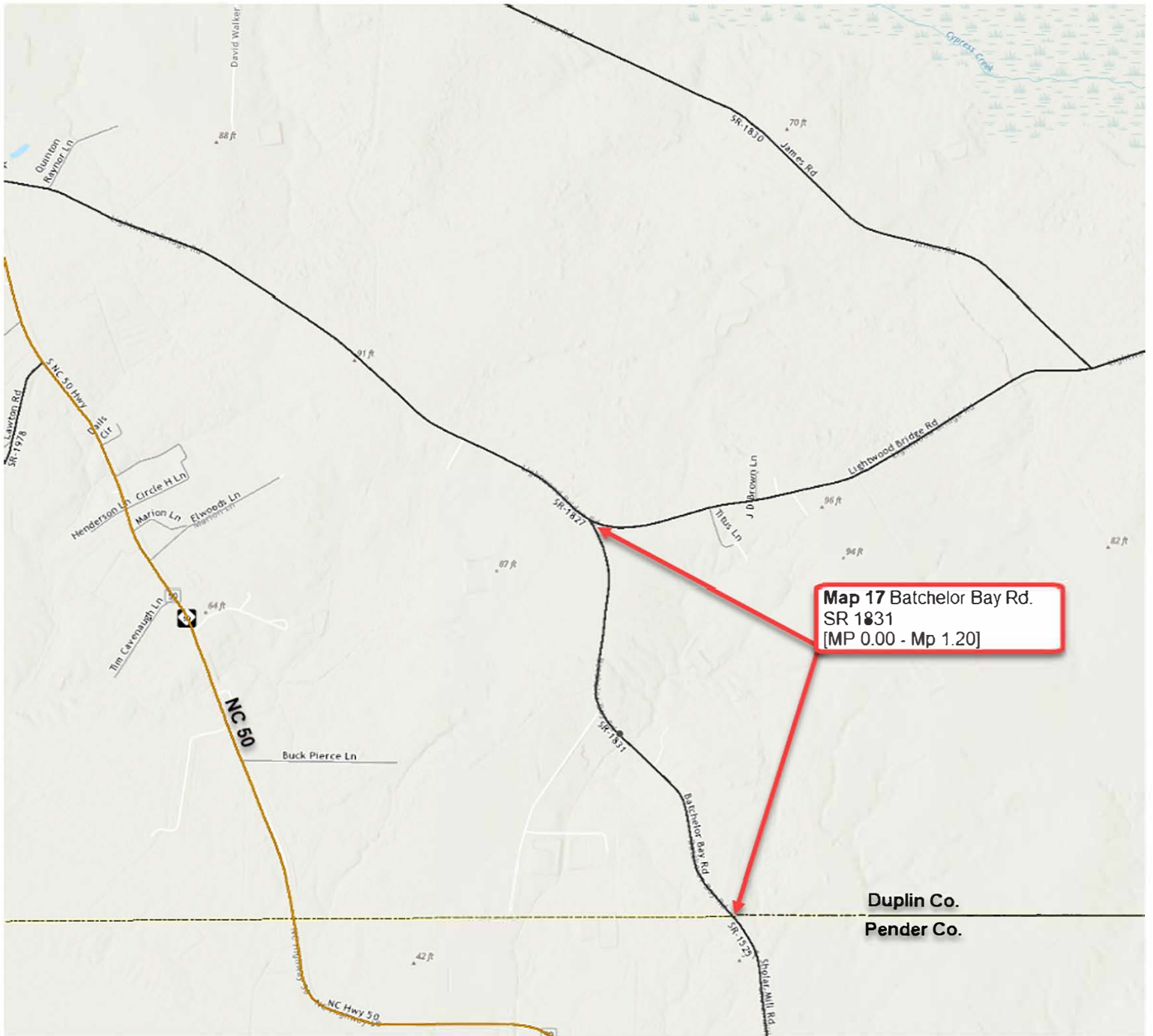


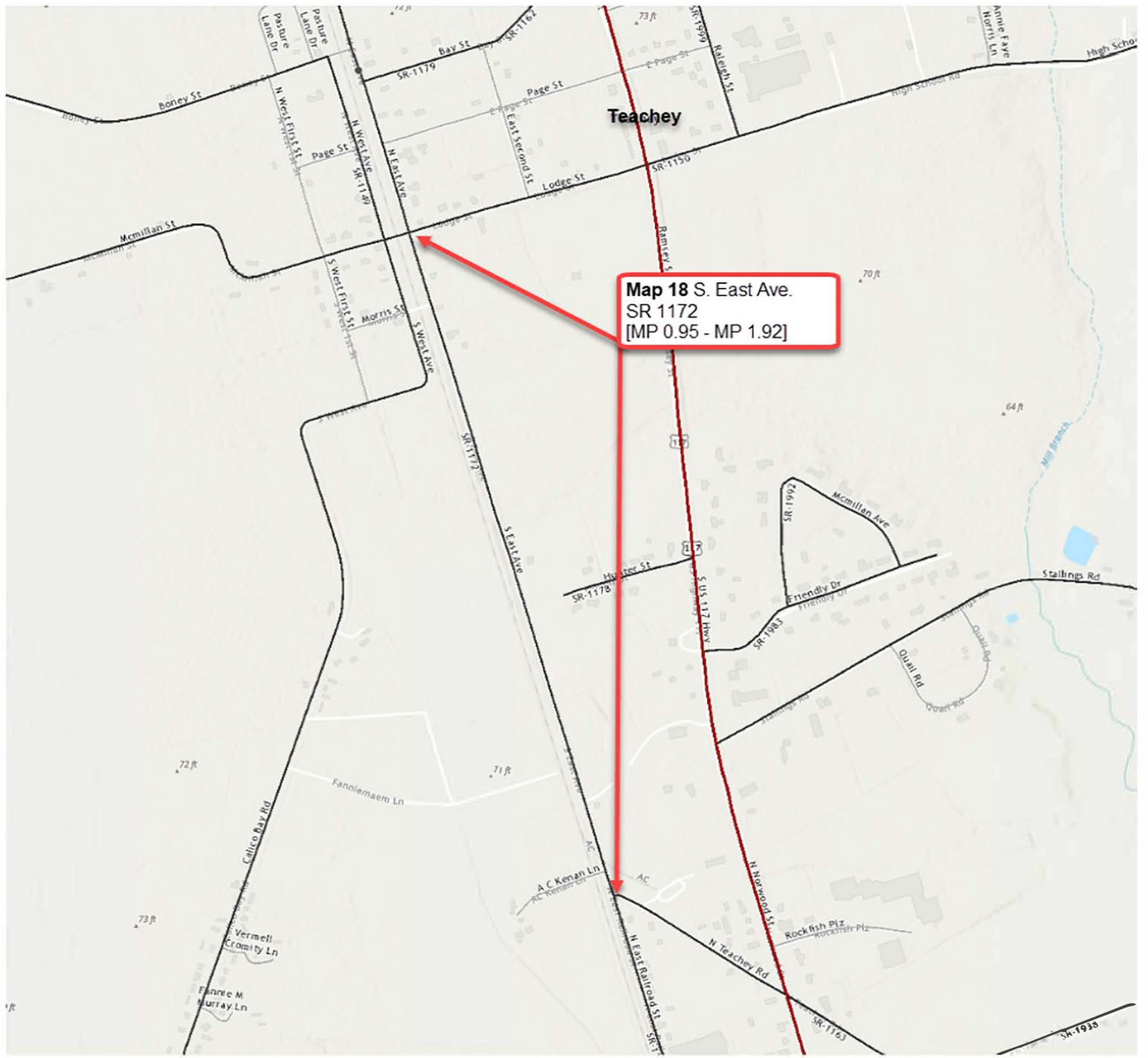




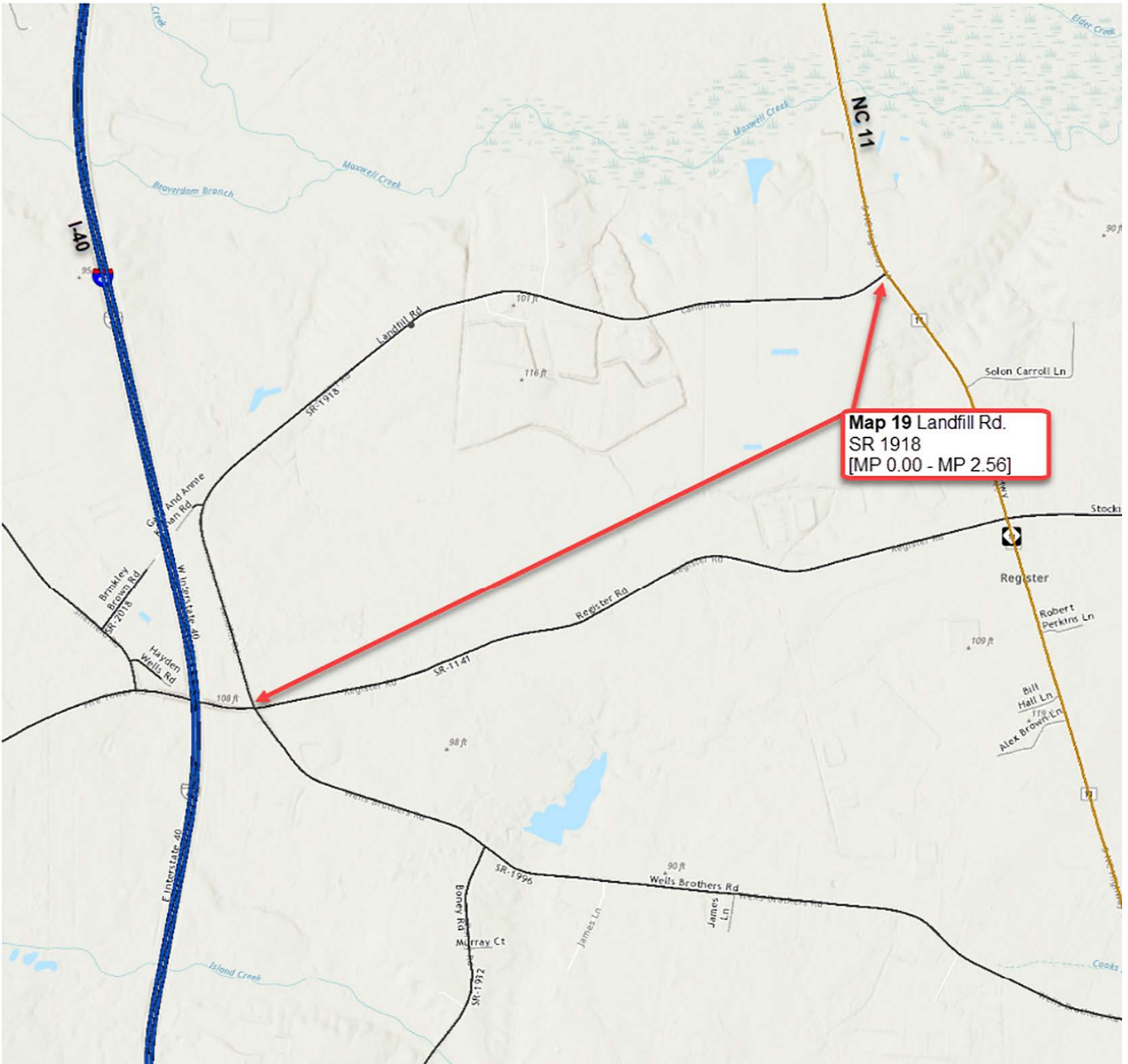








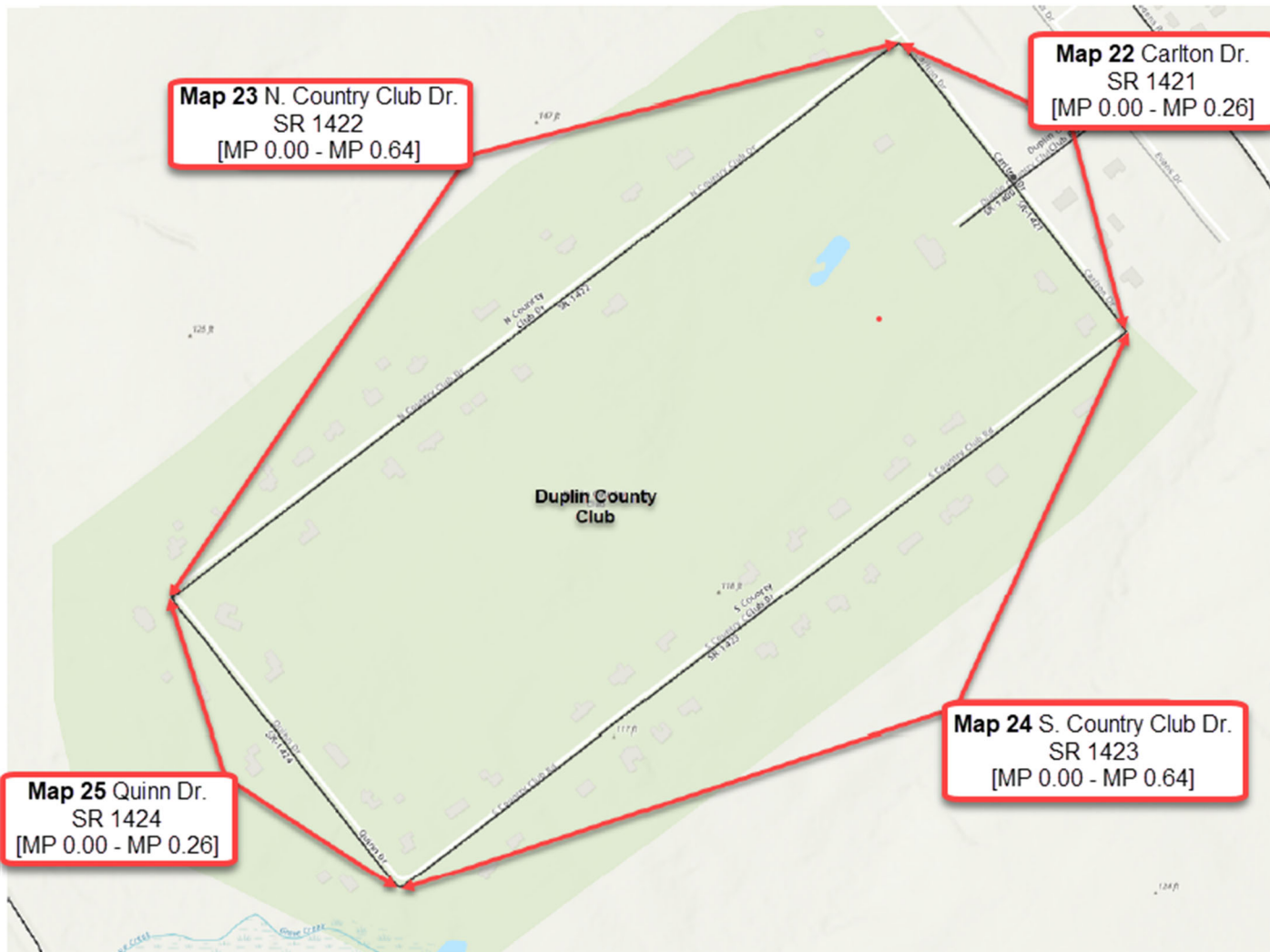












2019CPT.03.16.20312

## DUPLIN CO. PAVEMENT PRESERVATION

MAP	ROUTE NO.	FROM	TO	LENGTH (MI.)	TREATMENT	TONS
1	SR 1396	US 117	SR 1305	1.25	1.25" - SHORT OVERLAY (S9.5B)	185.0
2	SR 1343	US 117	SR 1342	0.85	1.25" - SHORT OVERLAY (S9.5B)	17.1
3	SR 1332	NC 403	SR 1304	2.02	1.25" - SHORT OVERLAY (S9.5B)	18.7
4	SR 1358	SR 1304	SR 1305	1.19	1.25" - SHORT OVERLAY (S9.5B)	9.3
5	SR 1351	SR 1307	SR 1301	0.95	1.25" - SHORT OVERLAY (S9.5B)	82.4
6	SR 1124	SR 1122	SR 1101	1.70	1.25" - SHORT OVERLAY (S9.5B)	168.8
7	SR 1108	NC 24	SAMPSON COUNTY	1.35	1.25" - SHORT OVERLAY (S9.5B)	185.1
8	SR 1381	SR 1380	SR 1300	2.13	1.25" - SHORT OVERLAY (S9.5B)	177.3
9	SR 1702	SR 1700	NC 111	0.75	1.25" - SHORT OVERLAY (S9.5B)	115.1
10	SR 1996	NC 11	SR 1141	2.57	1.25" - SHORT OVERLAY (S9.5B)	52.9
11	SR 1715	NC 111	NC 50	8.22	1.25" - SHORT OVERLAY (S9.5B)	318.9
12	SR 1516	SR 1300	SR 1700	2.32	1.25" - SHORT OVERLAY (S9.5B)	247.3
13	SR 1300	SR 1004	NC 11	5.66	1.25" - SHORT OVERLAY (S9.5B)	213.1
14	SR 1508	SR 1004	SR 1500	2.78	1.25" - SHORT OVERLAY (S9.5B)	312.7
15	SR 1707	NC 11	NC 111	2.83	1.25" - SHORT OVERLAY (S9.5B)	27.2
16	SR 1811	SR 1810	SR 1715	1.27	1.25" - SHORT OVERLAY (S9.5B)	261.3
17	SR 1831	SR 1827	ONslow COUNTY	1.20	1.25" - SHORT OVERLAY (S9.5B)	35.0
18	SR 1172	SR 1150	SR 1163	0.97	1.25" - SHORT OVERLAY (S9.5B)	280.0
19	SR 1918	SR 1141	NC 11	2.56	1.25" - SHORT OVERLAY (S9.5B)	235.7
					<b>TOTAL SHORT OVERLAY TONNAGE</b>	<b>2,943</b>
20	SR 1988	SR 1964	NC 41	0.25	1" - S4.75A RESURFACING	138.8
21	SR 1400	SR 1301	DEAD END	0.19	1" - S4.75A RESURFACING	110.3
22	SR 1421	SR 1423	SR 1422	0.26	1" - S4.75A RESURFACING	151.0
23	SR 1422	SR 1421	SR 1424	0.64	1" - S4.75A RESURFACING	371.8
24	SR 1423	SR 1421	SR 1424	0.64	1" - S4.75A RESURFACING	371.8
25	SR 1424	SR 1423	SR 1422	0.26	1" - S4.75A RESURFACING	151.0
			<b>TOTAL MILES</b>	<b>44.81</b>	<b>TOTAL S4.75A RESURFACING TONNAGE</b>	<b>1,295</b>